



For more Info...

Call: 484-241-6910

Email: forestry@versalifteast.com



CHASSIS

2015 Ford F-750

- Wheelbase: 212"; Cab to Axle: 138"
- GVWR: 33,000 lbs.; Front Axle: 12,000 lbs.; Rear Axle: 21,000 lbs.
- Cummins 6.7L Diesel Engine 240 H.P.
- Fuller FS-6406A 6-speed Manual & Allison Auto
- Air brake package with ABS
- 750 watt block heater
- Dual batteries, 1250 CCA
- 185 AMP alternator
- Single horizontal exhaust system
- Wheels: 22.5 x 8.25, 10-hole steel disc
- Front tires: 11R22.5
- Rear tires: 11R22.5 (traction tread)
- 50 gallon fuel tank
- Air Conditioning
- *More specification available upon request*

FORD VO270 FORESTRY

CONFIGURATION

- 11' Chip Box & Hoist Assembly with Holding Valve
- Includes "Hidden Box" at Front of Body
- Install Vynagrip at Rear of Body
- Spring Loaded Cab Guard with Non-slip Safety Plate, Grab Handles & Access Steps
- (2) Wheel Chock Holders & Chocks with Handles
- Kelsey Hayes Brake Controller
- 6-Pin Trailer Socket
- Cable Pull Type Trans. Mounted PTO & Pump
- 474-94 Pintle Hitch Assembly

LIFT

- Versalift® VO270E, per ANSI 92.2
- 10' Elevator, Structural Box Design
- 75' Working Height
- 50' 8" Horizontal Side Reach
- 24" x 24" Platform, Step & Liner with Scuff Pad
- 2 YEAR WARRANTY
- 3 Axis "HR" Control Handle
- Hydraulic Reservoir Shut-off Valve
- Full Pressure Open Center Hydraulic System
- Continuous Unrestricted Rotation
- (2) Sets of Hydraulic Tool Outlets at Platform
- (1) Set of Hydraulic Outriggers
- (1) Set of Lifton Outrigger Pads with Holders
- Teflon Bearings at all Boom Pivot Points
- Positive Chain-Glass Rod Leveling System
- No Mandatory Rebuild Required
- Emergency Power System
- Mechanical Outrigger Boom Interlock

SAFETY

- Stability Test, Load Test & Dielectric Test
- Four Point "LED" Strobe & Lighting Package
- (5) Inclinometers
- (2) Kidde 10LB Fire Extinguishers & Brackets
- Triangle Reflector Kit & First Aid Kit
- DOT Inspection
- Safety Belt & Lanyard
- Expanded Metal Step Inside Ladder Box
- Chip Body Safety Prop
- Non-Skid Paint, as required
- Unit Will Have Current ANSI & Dielectric Insp
- Versalift East QC Inspection Program



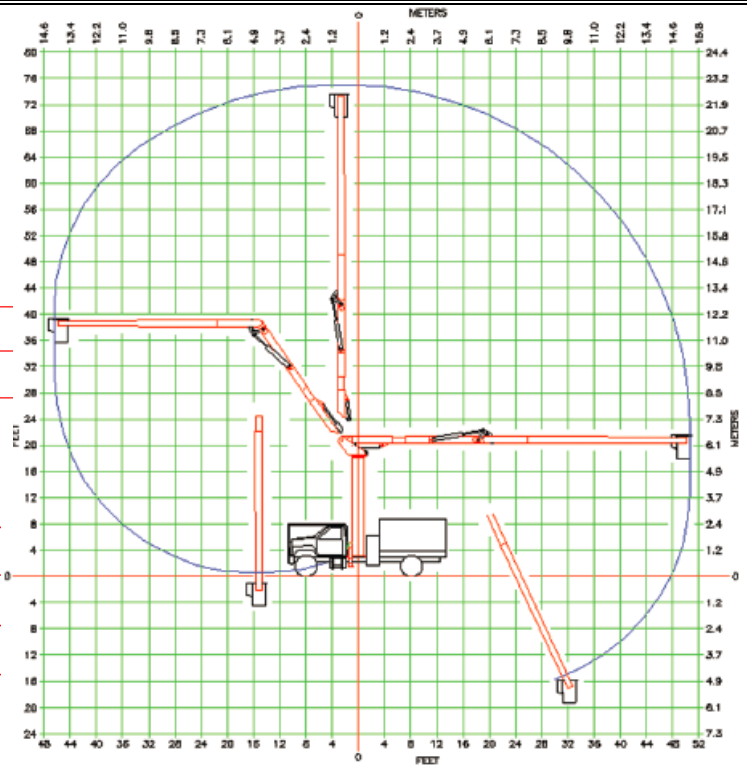
VERSALIFT® FORESTRY PRODUCTS www.versalifteast.com



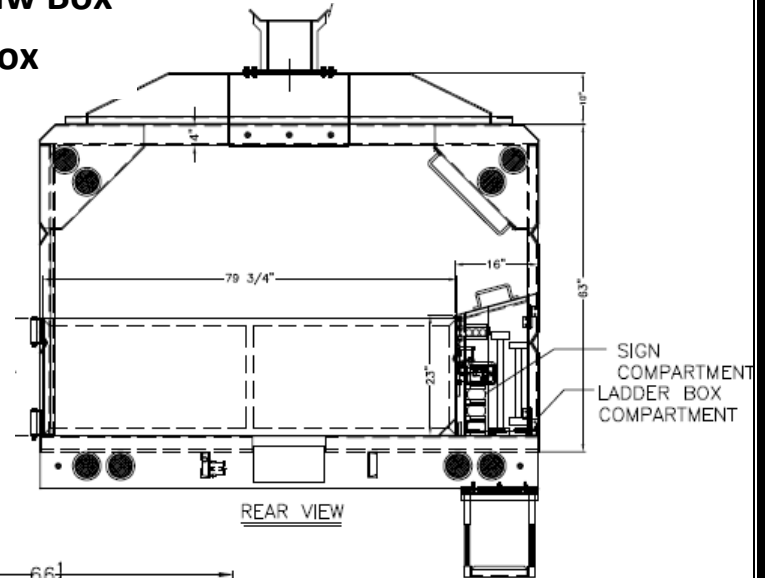
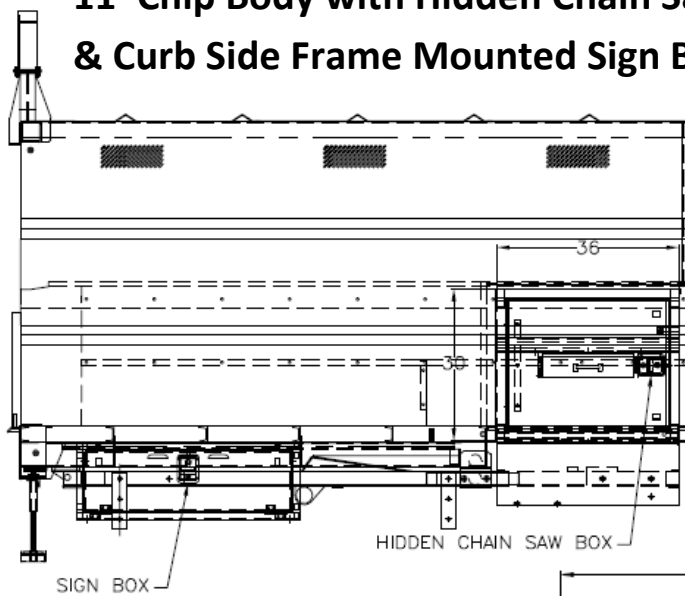
VERSALIFT

Insulated Articulating Over Center Aerial Device

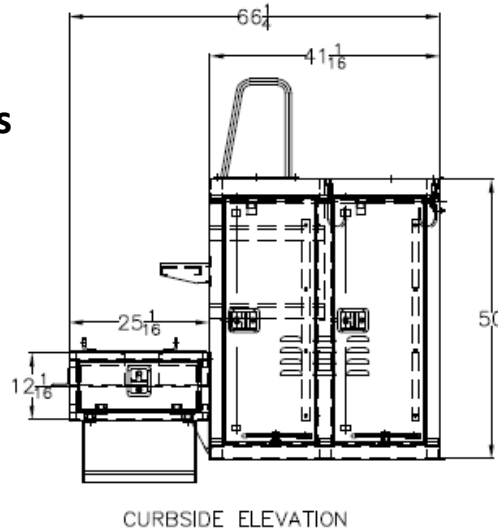
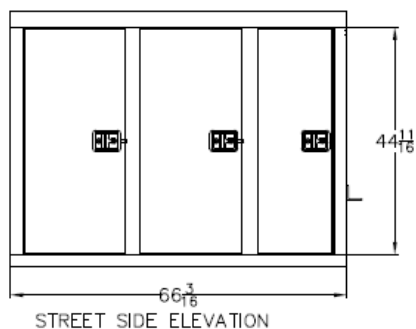
GENERAL SPECIFICATIONS	VO-270-E
Horizontal Reach Overcenter	50'8" (15.4m)
Horizontal Reach Non-Overcenter	46'5" (14.1m)
Maximum Platform Capacity	350 lbs. (159kg)
Lower Boom Lift Eye Capacity	1,500 lbs. (680kg)
Height to Bottom of Platform	70'10" (21.6m)
Working Height	75'10" (23.1m)
Stowed Travel Height	12'9" (3.8m)
Weight of Lift	9,600 lbs. (4350kg)



11' Chip Body with Hidden Chain Saw Box & Curb Side Frame Mounted Sign Box



Street & Curb Side Boxes



Curb-side compartments include a single compartment with 2 vertical doors.

Street-side has 3 transverse compartments open to street-side. Top center has 2 fixed shelves. Top right has 6 swivel rope hooks.